

# Svalbard Science Forum

33<sup>rd</sup> NySMAC meeting, Ny-Ålesund 13-15/9 - 2010



## Ny-Ålesund Science Plan

- Endorsed by NySMAC: 21 May
- Adopted by SSF: 11 June
- Effective since 12 June
- Can be downloaded from SSF-webpage

Svalbard Science Forum

### Ny-Ålesund Research Base

Home > Research > Research Bases > Ny-Ålesund

**Ny-Ålesund - the Kongsfjorden International Research Base (KIRB)**

Ny-Ålesund (79°N) is an international base for research in all sciences involving the arctic marine, terrestrial and atmospheric environments. The main activities are related to climate research and environmental monitoring.

Ny-Ålesund is managed by Kings Bay AS that provides transportation, accommodation, meals and logistics for the research community. Office space and laboratories are offered by both, Kings Bay AS and the individual research stations. Researchers that work in Ny-Ålesund have to be associated to one (or several) of the permanent research stations in Ny-Ålesund. If you would like to work in Ny-Ålesund, but have no association to any of the stations, please contact the Sverdrup Station from The Norwegian Polar Institute.

The Norwegian authorities have designated Ny-Ålesund to be a 'green' scientific station, where scientists should get access to a near pristine environment and where local pollution is kept at a minimum. Ny-Ålesund is also a 'radio silent area', permitting the effective use of passive receiving equipment.

Many of the research projects are carried out in international cooperation. For the period 2006-2009 Ny-Ålesund has the status of a European Centre for Arctic Environmental Research with support from the European Union (Research infrastructure Program in EU).

For funding opportunities, check the [Arctic Field Grant](#).

**Go directly to:**

- [Research stations](#)
- [Science Plan](#)
- [Long-Term Biodiversity Research](#)
- [Scientific activities](#)
- [NySMAC](#)
- [EIA Reports](#)
- [Trawling regulation](#)
- [How to get there](#)

**Contact information:**  
Kings Bay AS  
9173 Ny-Ålesund  
Norway

Phone: +47 7902 72 00  
Fax: +47 7902 72 01  
Email: [booking@kingsbay.no](mailto:booking@kingsbay.no)

Website: [www.kingsbay.no](http://www.kingsbay.no)

Kings Bay scientist & Marine Laboratory registration:  
<http://research.kingsbay.no/>

The research base Ny-Ålesund (Photo: L. Bakken)

Updated 16 June 2010

Home | Database

Subscribe to Newsletter

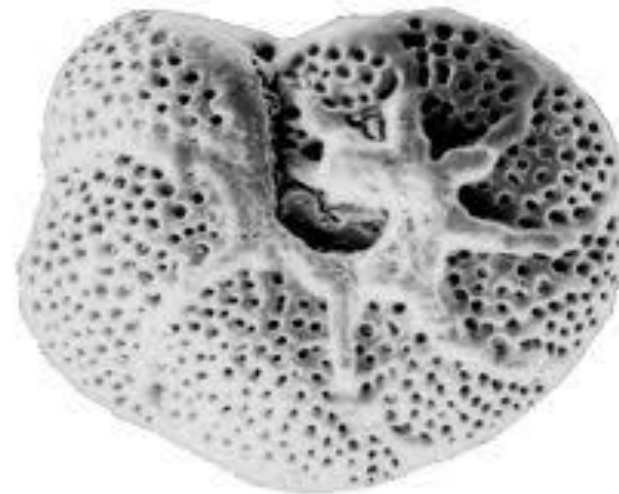
## RiS database – one stop platform

- Specification almost completed
- Next steps: layout → programming → testing  
→ trial version in spring 2011



## Workshop: Geology

- Postponed to spring 2011
- Theme: *Past and present (marine) sedimentary processes, climate and environments on Svalbard.*
- Input welcome!



## Status flagship programmes

- Snow and ice flagship

→ *Workshop planned for spring 2011*

- Terrestrial ecosystems flagship

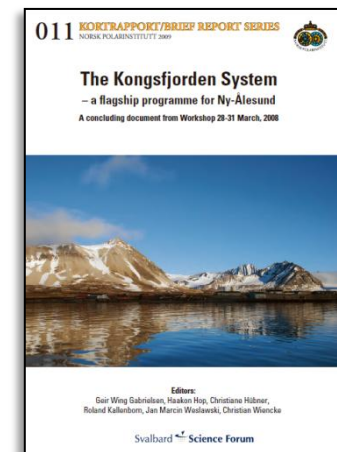
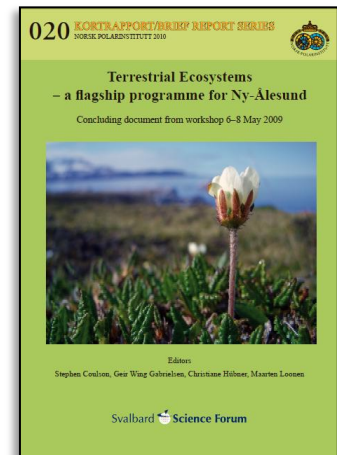
→ *Document released*

- Atmosphere flagship

→ *Document will soon be finalized*

- Kongsfjorden System

→ *Progress? Funding?*



## International student camp

- Last NySMAC meeting: KOPRI informed about their student programme
- The idea about an international student camp was raised – SSF was appointed to look into possibilities
- First mapping of interest → 2 stations gave feedback
- UNIS has signalled interest

## International student camp - *continued*

- Next steps:
  - More input from the stations needed
  - Planning group?
  - Suggested date: 2012 (preferably spring or autumn)

## Business card - Information Centre



Ny-Ålesund - 78° 53' N, 11° 56' E

# Kongsfjorden International Research Base

Ny-Ålesund & Kongsfjorden

Research & environmental monitoring

Use & protection of the environment

Svalbard's nature & climate

<http://kingsbay.spektermedia.net/>

## Business card - Information Centre



Ny-Ålesund - 78° 53' N, 11° 56' E

# Kongsfjorden International Research Base

Ny-Ålesund & Kongsfjorden

Forskning & miljøovervåking

Bruk & vern av miljøet

Svalbard's Natur & Klima

Ny-Ålesund & der Kongsfjord

Forschung & Aufzeichnung von Umweltparametern

Nutzung & Schutz der Umwelt

Spitzbergens Natur & Klima

<http://kingsbay.spektermedia.net/>

## KIRB highlights presentation

### Kongsfjorden system flagship

- Phytoplankton, zooplankton and little auks
- Seafloor mapping-what is growing where? Why?

### Atmosphere flagship

- Pollution (e.g. POP measurements from the Zeppelin station linked with POP levels in seabirds and in food web in general ) or CO<sub>2</sub> in lower atmosphere
- Aurora borealis
- Greenhouse gas measurements & continuing increase in methane concentrations (NILU)

## KIRB highlights presentation – *continued*

### Terrestrial ecosystem flagship

- Counting of foxes, geese and reindeer linked to weather conditions (e.g. warm winters-reduced survival of reindeer-food provided for foxes-increased amount of foxes-pressure on goose population)
- Reindeer-vegetation, goose-vegetation feedback
- Last glacial maximum and Nunataks-maybe link to refugees for plants and insects?
- Colonization of glacial forelands by plants, insects; succession

### Snow and ice flagship

- Glaciology- mass balance monitoring, maybe related to position of glacier front
- Permafrost monitoring in Ny-Ålesund
- Sea ice extent and thickness-development over the years

## KIRB highlights presentation - *continued*

### Others

- Geology-how Svalbard moved to its current position, collision with Greenland...
- Toxoplasmosis (fox, seal, polar bear)

## Practice of radio quiet conditions in Ny-Ålesund

\* Do you plan to use actively electromagnetic radiation emitting equipment ? Yes  No

[Information about operational practice \(NySMAC\)](#)

[Legislation \(http://www.lovdatab.no/for/sf/sd/xd-20090602-0580.html\)](http://www.lovdatab.no/for/sf/sd/xd-20090602-0580.html)

### Registration of actively emitting equipment

Choose existing instrument:

\* Localisation:

\* Frequency:

\* Directivity:

\* Power:

\* Effect:

\* ERP:

\* EIRP:

\* Operation mode:

\* Start date (DD-MM-YY):

 Calendar

\* End date (DD-MM-YY):

 Calendar

Additional information:

Add to list

*Equipment registered*

Edit

Delete

Save

Save and continue

**Note:**

Ny-Ålesund is a radio silent area:

[Information about operational practice \(NySMAC\)](#)

Please make sure that you are not using any actively electromagnetic radiation emitting equipment.

For urgent exemptions contact your research station.