

Korea Polar Research Institute



12 April, 2010

KOPRI

CONTENTS

The background of the slide is a photograph of an ice cave. The walls and ceiling are made of translucent, blue-tinted ice. Two people wearing red survival suits are visible in the lower right portion of the cave. One person is standing and pointing towards the left, while the other is kneeling or sitting on the ice. The lighting is soft and diffused, creating a serene and cold atmosphere.

1. The Plan of Scientific Activities in 2010

2. The Plan of Non-Scientific Activities in 2010

Status Report

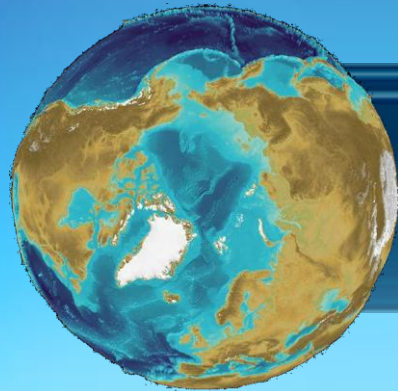


Project Name	Numbers	
Optimum utilization of satellite data for polar research	11	
Diversity and DNA barcoding of macro-algae from the Arctic and the Antarctic	5	
Arctic Marine Microbial Diversity Project	1	
Biodiversity and cold-adaptation of the Arctic Organism	4	
Integrated research on the composition of polar atmosphere and climate change (COMPAC)	7	
Pole-to-Pole Korea (outreach)	10	
Total	28	

Status Report



Project Organizations	Numbers	
KOPRI (Korea Polar Research Institute)	16	
KORDI (Korea Ocean Research & Development Institute)	2	
POSTECH (Pohang University of Science and Technology)	1	
Seoul National University	3	
Bukyoung University	1	
Kongju National University	2	
Inha University	1	
Sweden Universiti of Gothenberg	1	
Others	1	
Total	28 people	



Scientific Activities

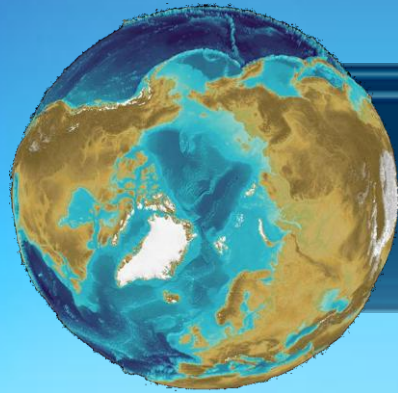


- **Optimum Utilization of Satellite Data for Polar Research**
 - Purpose: Satellite Polar Research
 - Period: 18-31 May
 - Participants: 11 persons
- **Diversity and DNA barcoding of macro-algae from the Arctic and the Antarctic**
 - Purpose: To Collect & Study Algae
 - Period: 12 April – 12 August
 - Participants: 5 persons
- **Arctic Marine Microbial Diversity Project**
 - Purpose: Arctic Marine Microbial Diversity Project
 - Period: 14-21 June
 - Participants: 1 person

- **Biodiversity and Cold-adaptation of the Arctic Organism**
 - Purpose: To study the biodiversity of various organisms around Ny-Ålesund
 - Period: 12-22 July
 - Participants: 4 persons

- **Integrated research on the COMposition of Polar Atmosphere and Climate Change (COMPAC)**
 - Purpose: To study the role of polar region in the climate change for the mid-latitudes
 - Period: 14 May – 30 July
 - Participants: 7 persons





Non-Scientific Activities



- **Pole-to-Pole Korea**

- Korean Outreach Program
- Mid-High School Students
- Selection procedure started
- During summer vacation, July-August

- **Delegation**

- Delegation may visit the station to observe the status
- We expect it will help strengthening polar research activities



Thank you

